



TTC XDS110

User Guide

Version: V1.2

Shenzhen Shengrun Technology Co., Ltd

17th Jan, 2017

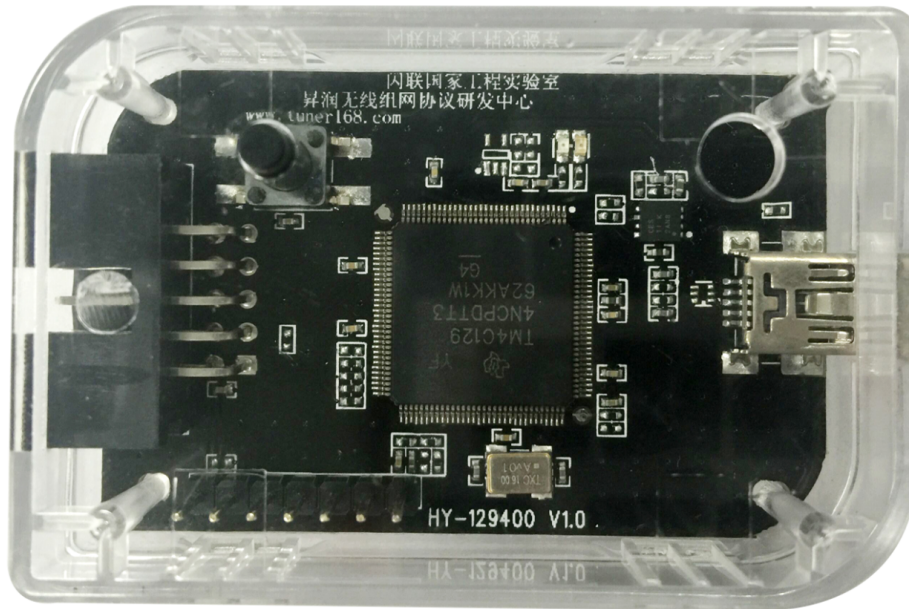
Version	Revised date	revisionist	reviewer	Modified content
1.0	2016-07-09	郭高亮	张眼	First release
1.1	2016-07-12	郭高亮	张眼	Improve the debug port description
1.2	2017-01-17	郭高亮	张眼	Update the physical map

目 录

1.Introduction.....	1
2. Supported chips series	1
3. Operating conditions	1
4.Pins Information	2
5.Pins description	2
6.Contact us.....	3

1. Introduction

XDS110 is a good simulator, downloader between XDS100 and XDS200. XDS110 performance higher than the XDS100, the price is lower than the XDS200, very suitable for CC26xx series of debugging and production and production



2. Supported chips series

- CC2650
- CC2640
- CC2630
- CC2538

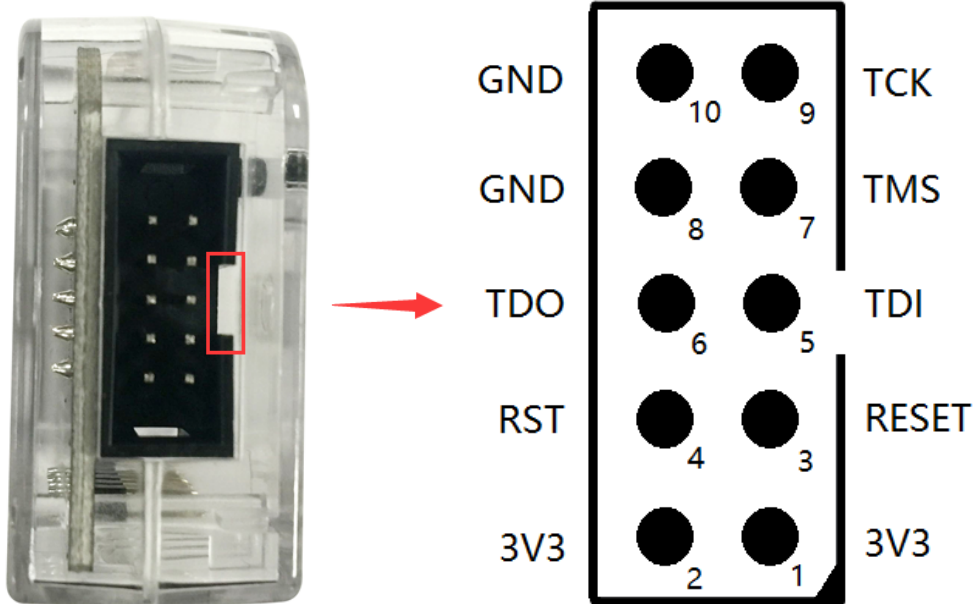
3. Operating conditions

- Minimum target chip voltage: 2V
- Maximum target chip voltage: 3.6V
- Operating temperature: 0 °C - 85 °C
- Maximum output current: 500Ma
- Supported operating systems: Win7 (32 & 64bit), Win8 (32 & 64bit), Win10 (32 & 64bit)

4.Pins Information

The left side of the figure for the XDS110 physical side of the map, the right side of the debugging interface diagram.

Note: please note the Anti reverse notch.



5.Pins description

No.	Pin	Description
1	3V3	Power output
2	3V3	Power output
3	RESET	Reset signal
4	RST	Reset signal
5	TDI	JTAG standard interface, Test Data In
6	TDO	JTAG standard interface, Test Data Out
7	TMS	JTAG standard interface, Test Mode Select
8	GND	Ground
9	TCK	JTAG standard interface, Test Clock
10	GND	Ground

6.Contact us

深圳市昇润科技有限公司

ShenZhen ShengRun Technology Co.,Ltd.

Tel: 0755-86233846 Fax: 0755-82970906

Website: www.tuner168.com

Alibaba Shop: <http://shop1439435278127.1688.com>

E-mail: marketing@tuner168.com

地址：广东省深圳市南山区西丽镇龙珠四路金谷创业园 B 栋 6 楼 601-602

ADD: the 6F, BBlock of jingu Pioneer Park, longzhu 4th Road, Nanshan District, Shenzhen, China

